



*MIT Kerberos
Status Report*

**AFS & Kerberos
Best Practice Workshop
2007**

What a difference a year makes

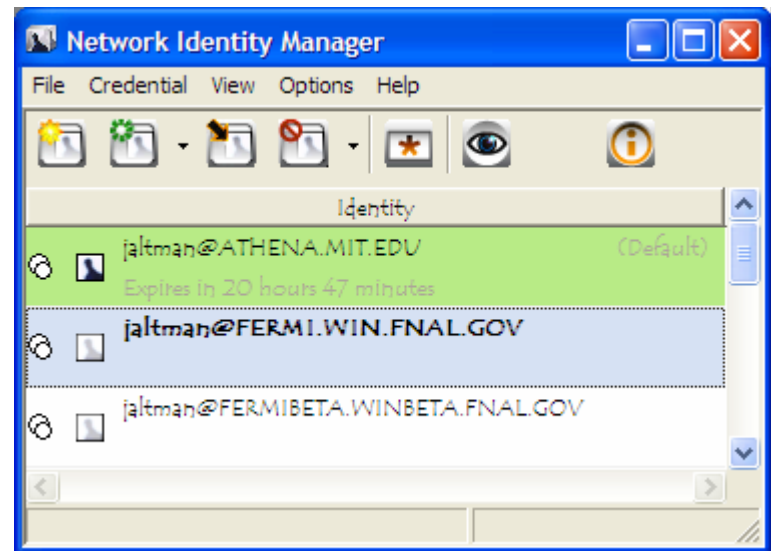
- MIT Kerberos 1.6.1
 - Plug-ins
 - UMich has implemented a PKINIT plug-in. Interop testing later this month
 - Referrals (compatible with Active Directory)
- KFM 6.0 will be included in MacOS X Leopard later this year
- KFW 3.2 released last week
- Network Identity Manager 1.2



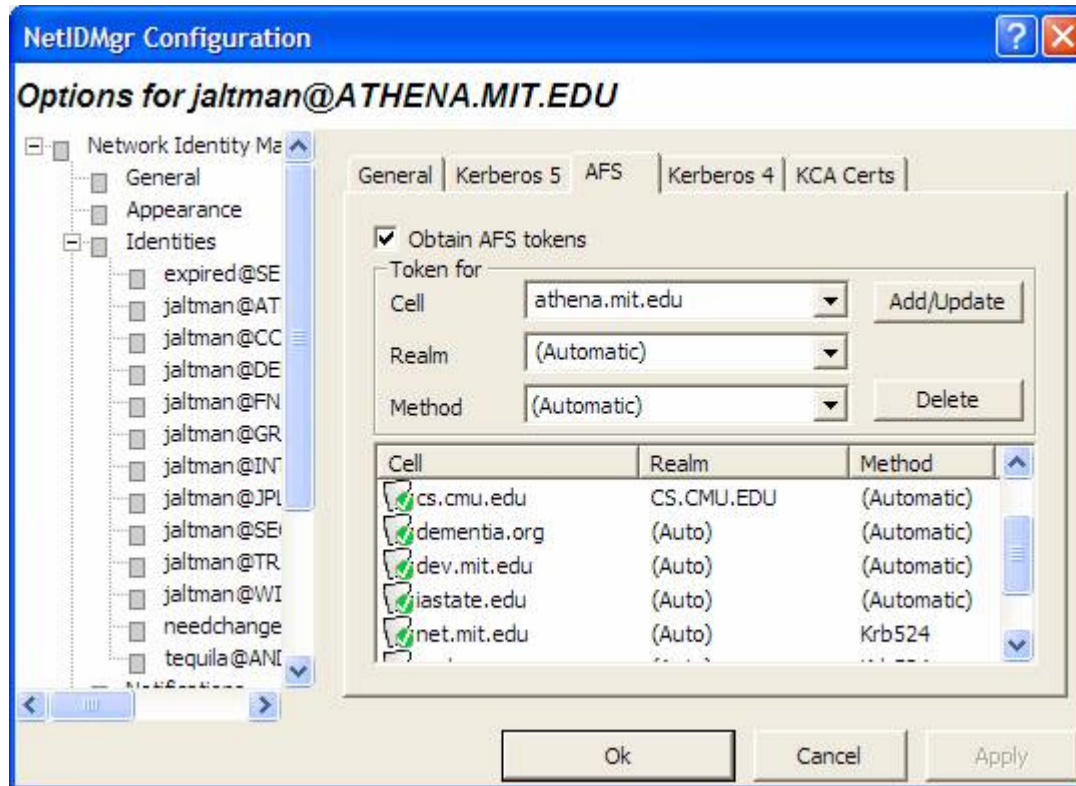
secureendpoints

Kerberos for Windows

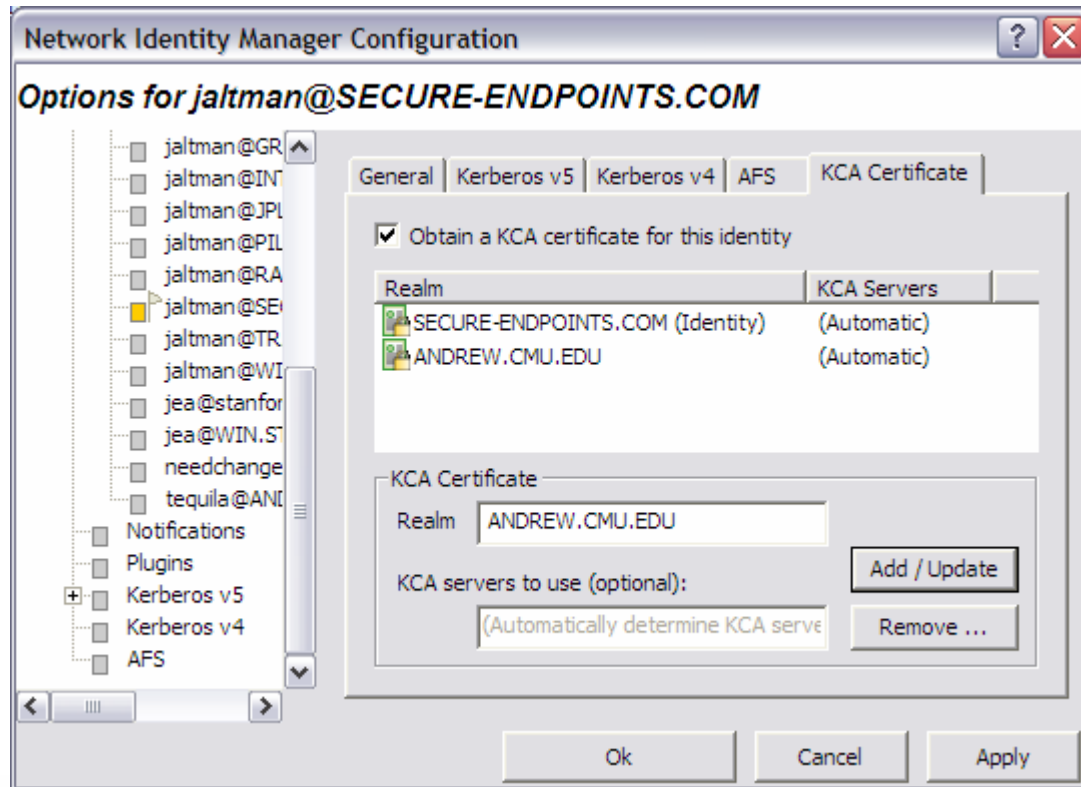
- New User Interface for NIM
 - Simplified for common usage scenarios
- More automation
- Vista compatibility
- Integrated Logon improvements



Network Identity Manager AFS integration



Network Identity Manager Kerberized Certificate Authorities



Future Plans: UNIX

- 1.6.x (Summer 2007)
 - PKINIT support
 - Bug fixes
- 1.7 (1st Half 2008)
 - Still in the planning stages

Future Plans: Kerberos for Windows 3.x

- PKINIT
- Google Desktop integration
- Vista LSA Cache Synchronization
- Custom Icons and Notification Sounds

Future Plans: Kerberos for Windows 4.0

- 64-bit Windows
- New Credential Cache architecture
- Kerberos Identity Management API
- Vista Widget
- No more Kerberos v4 support
 - krb4 libraries for 32-bit Windows will be re-packaged as a separate for plug-in for NIM
- No more support for Windows 2000
 - Minimum XP SP2

MIT Kerberos Consortium

- Launching in Fall 2007
- Will join vendors, large users and support organizations
- Focused on establishing Kerberos as the Single Sign-On and authentication technology for the Internet
- For more info, contact Stephen Buckley <sbuckley@mit.edu>



Got Questions About MIT Kerberos?

- Mailing Lists
 - kerberos@mit.edu
 - krbdev@mit.edu
 - kfwdev@mit.edu



Contact Information

Jeffrey Eric Altman

jaltman *at* secure-endpoints *dot* com